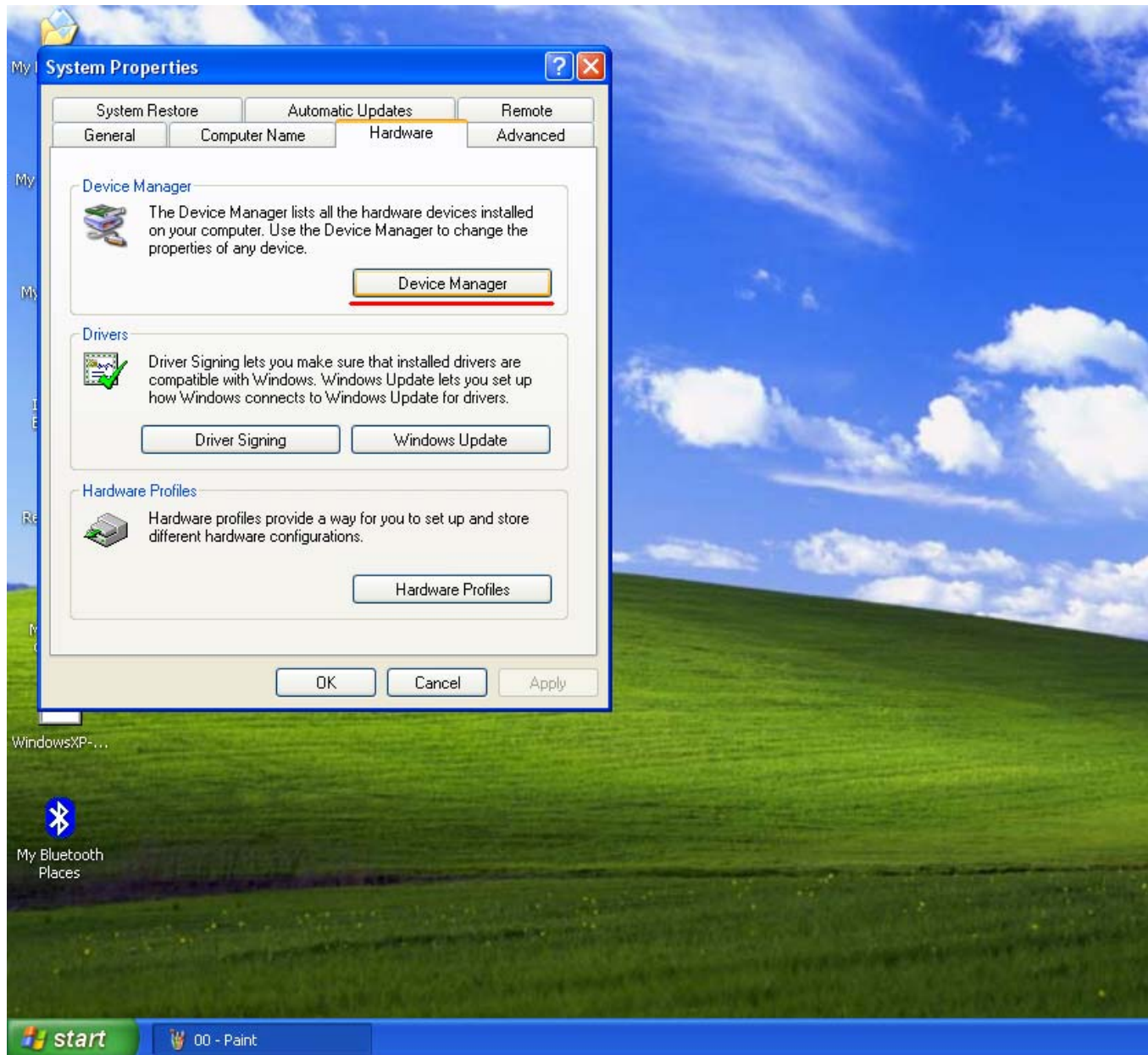
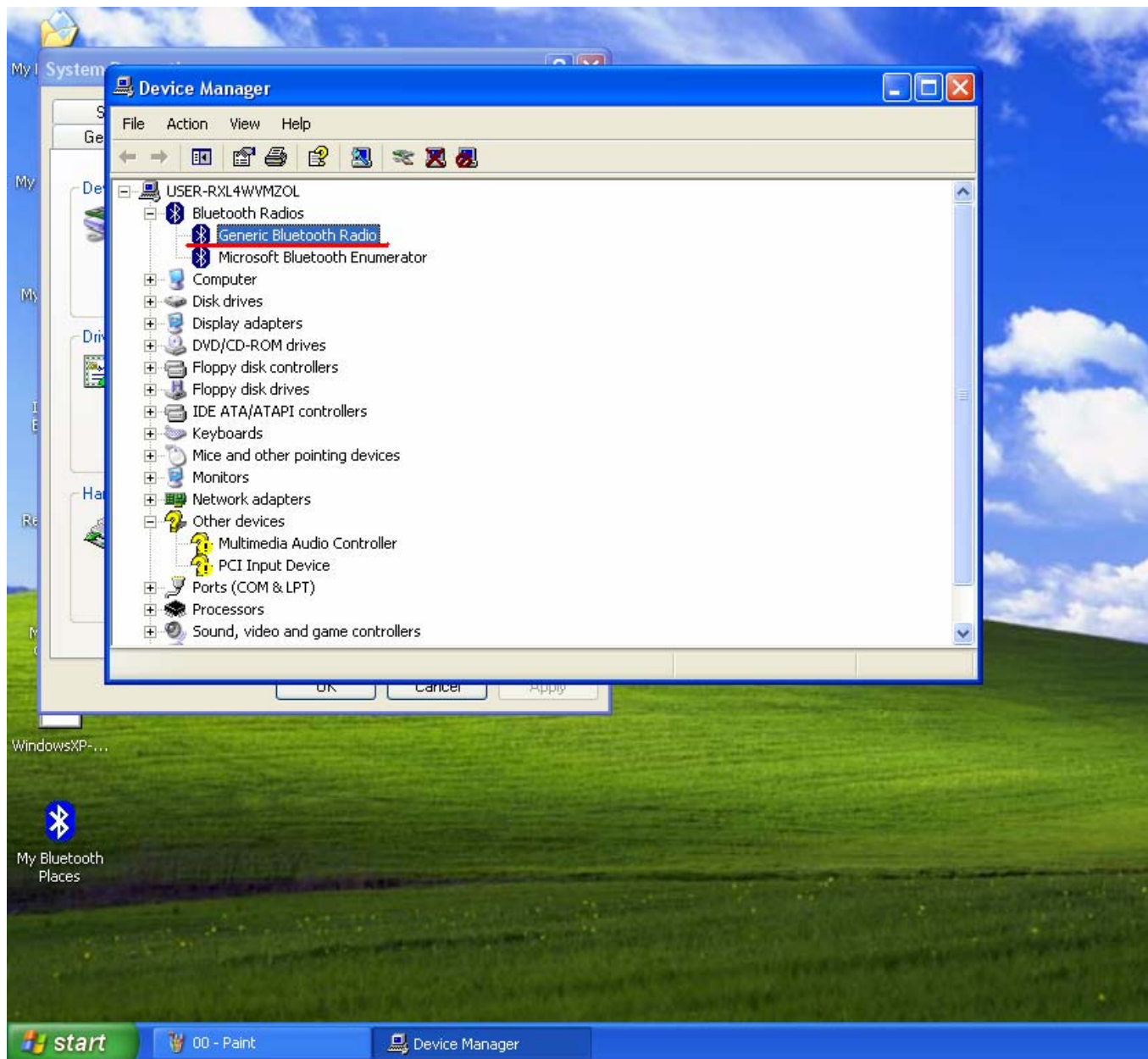


Here is how the Bluetooth Driver runs USB Adapter in the Windows XP SP2.

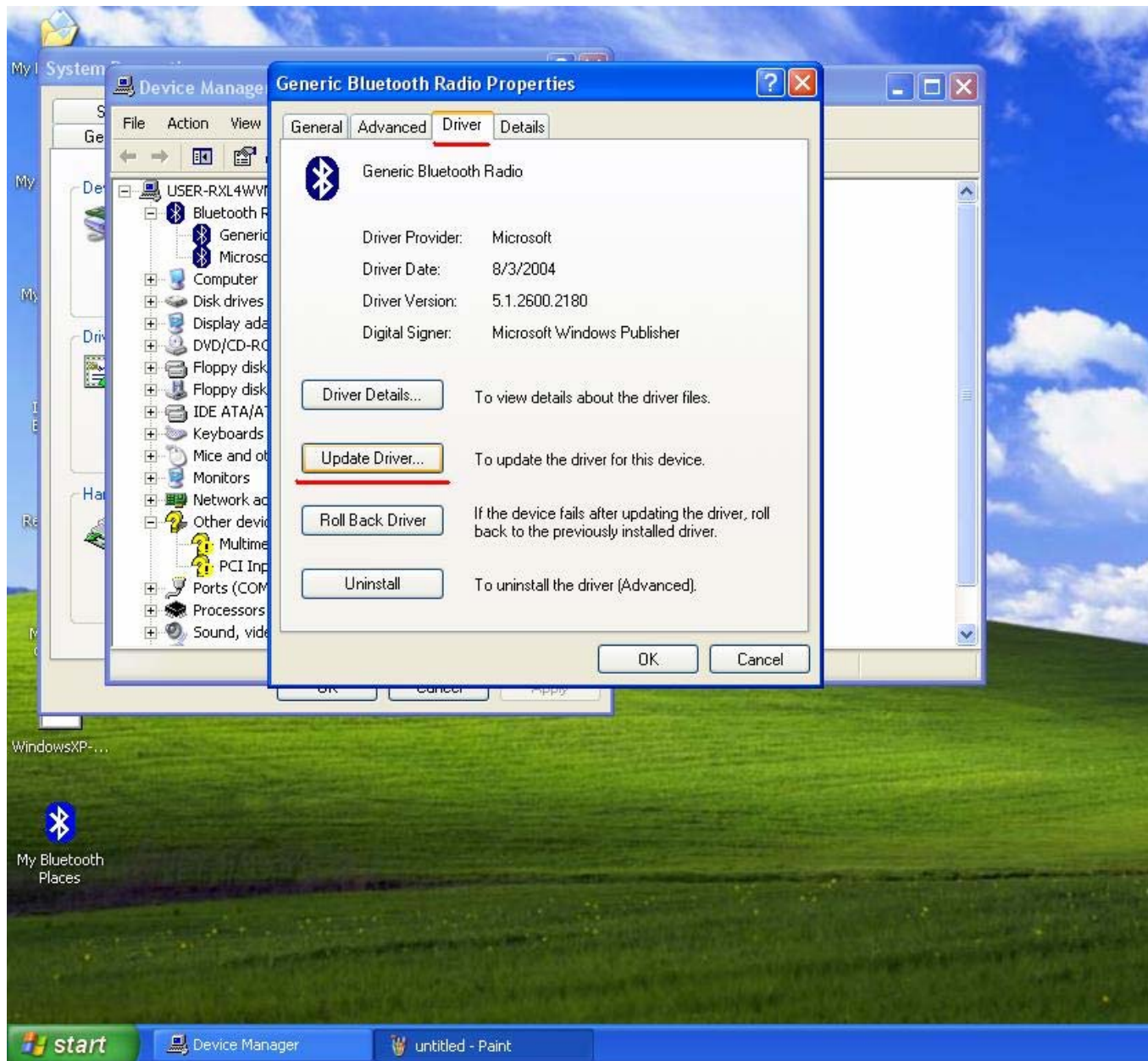
1. After the installation of the driver, plug the USB adapter into PC. Now, the USB Adapter is not yet activated.( The red color of the Bluetooth Icon indicates that the Bluetooth device is not yet activated.)



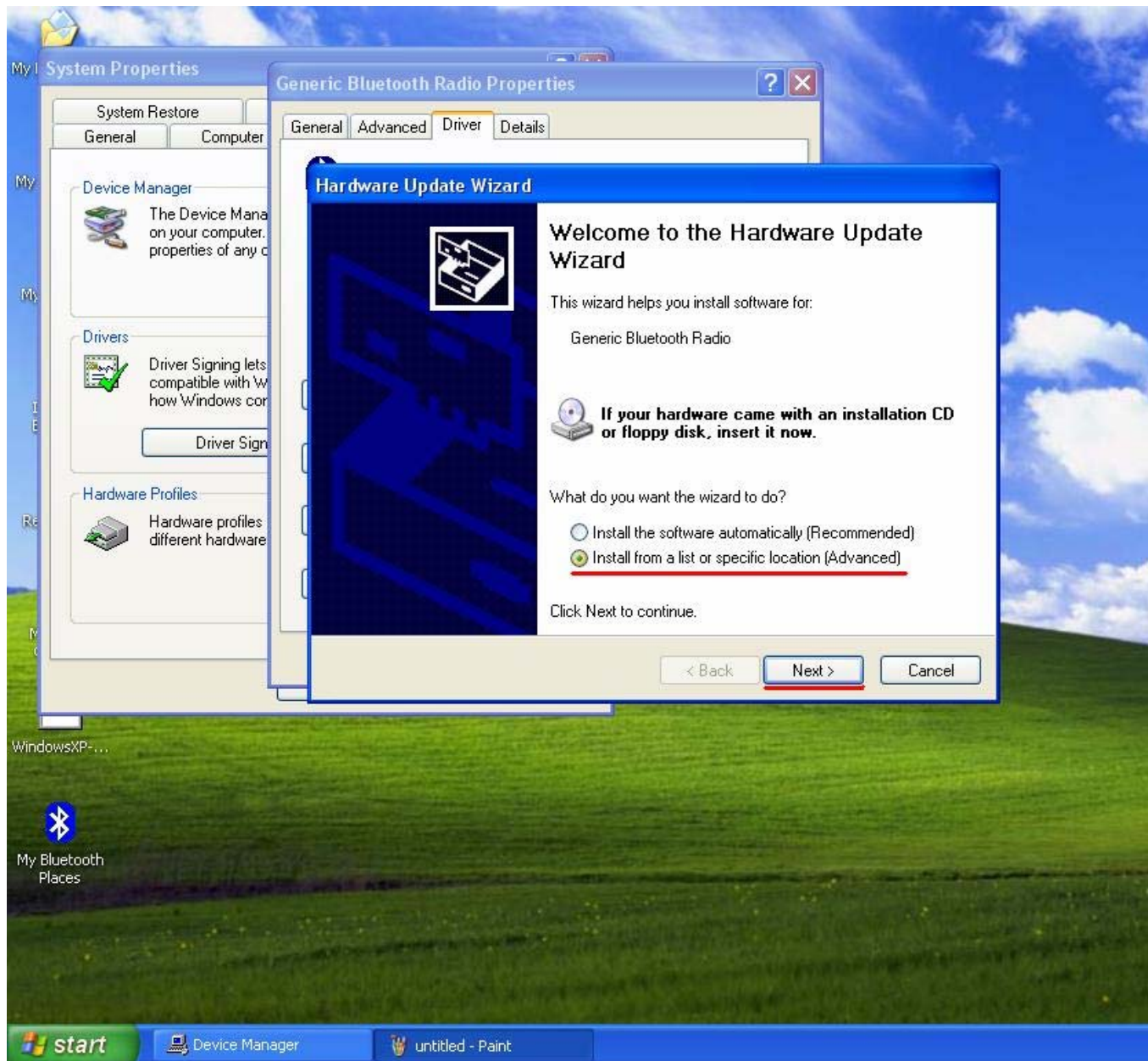
2. Choose Generic Bluetooth Radio in Bluetooth Radios.



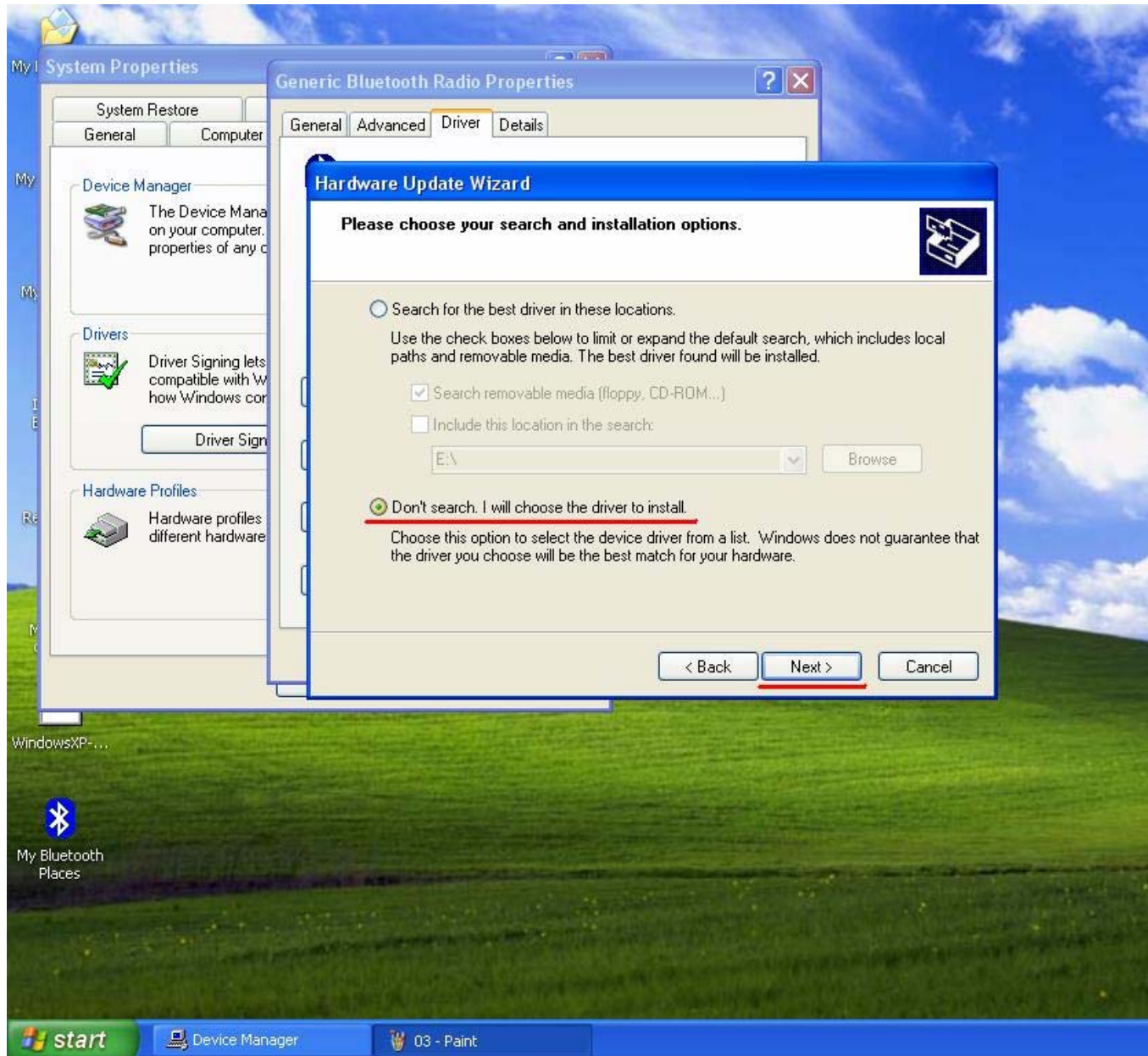
3. Choose Update Driver in Driver icon.



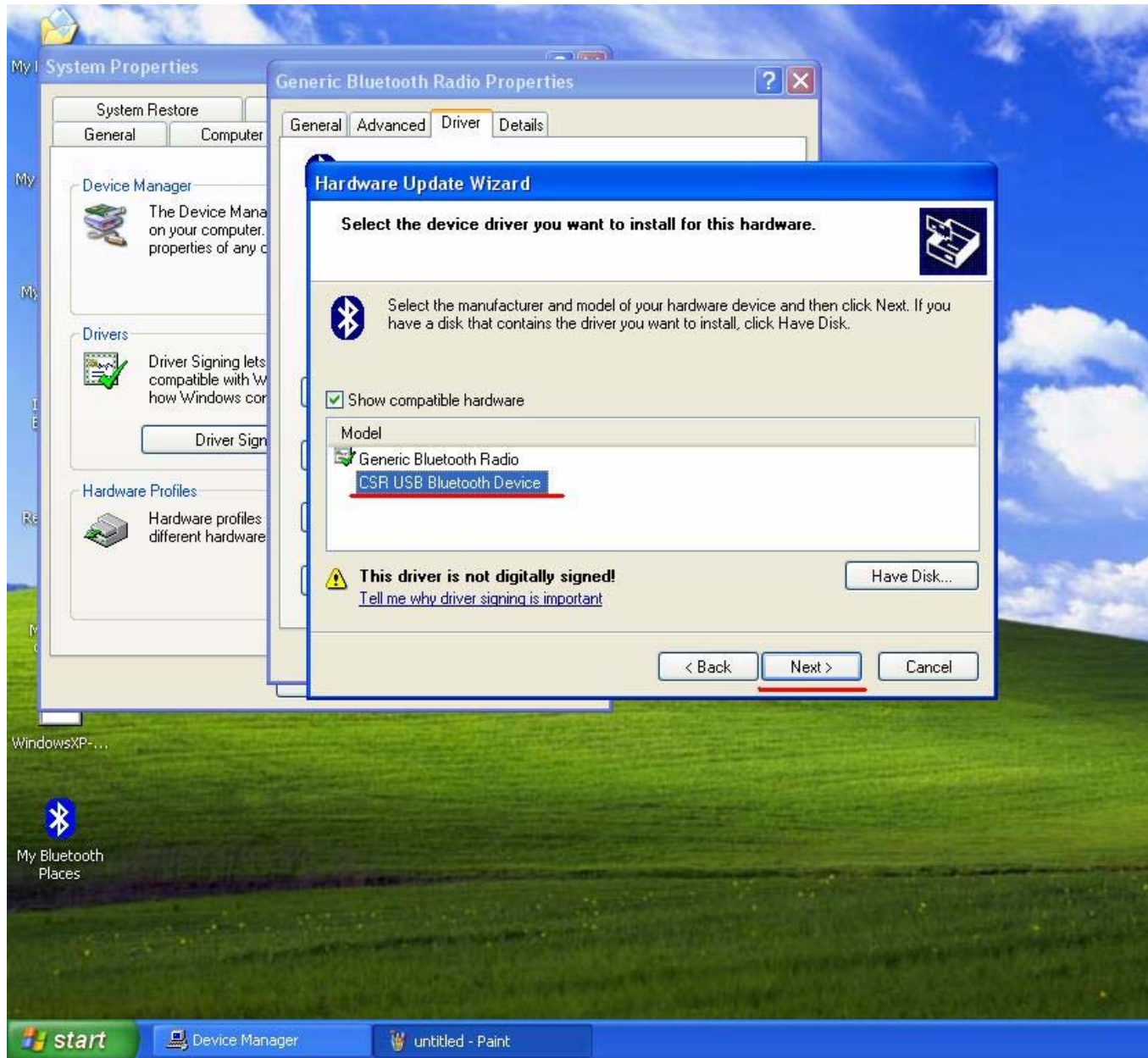
4. Choose Install from a list or specific location  
(Advanced) and click Next.



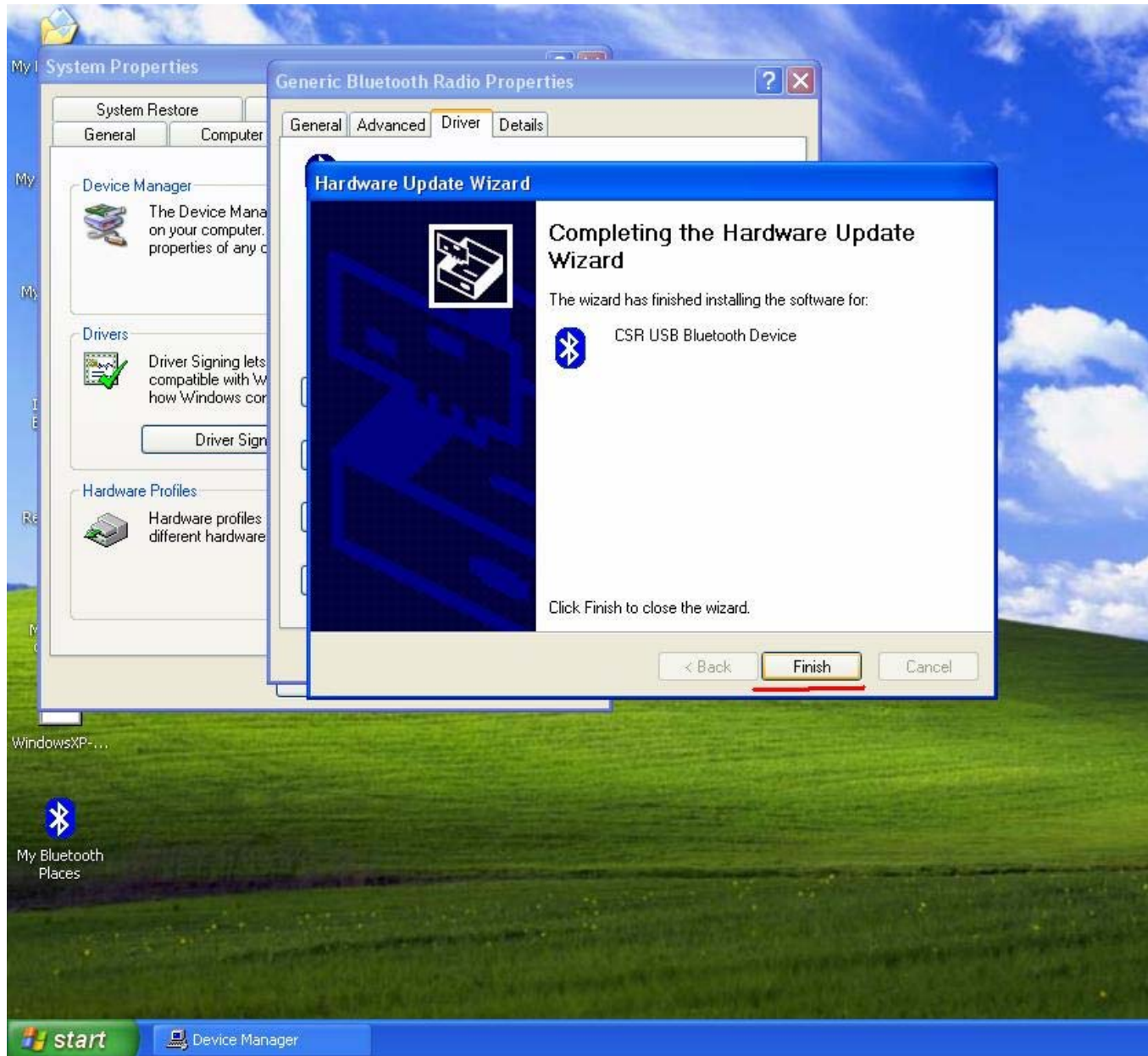
5. Choose Don't search. I will choose the driver to install and click Next.



6. Choose CSR USB Bluetooth Device and click Next.



7. Installation Finished.



8. Check if there is CSR USB Bluetooth in the Bluetooth Devices icon. If the Bluetooth Icon in the down-right side of the screen

turns into White color, the  
USB Adapter is now activated.

